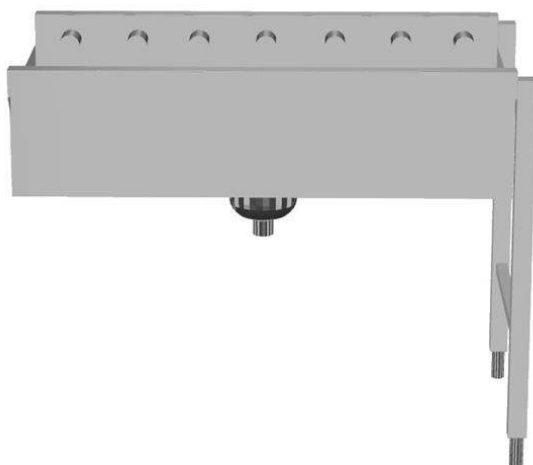




## Handling System for Dishwasher Short roller conveyors with deep basin

ITEM # \_\_\_\_\_  
MODEL # \_\_\_\_\_  
NAME # \_\_\_\_\_  
SIS # \_\_\_\_\_  
AIA # \_\_\_\_\_



863065 - 863066 - 863067 - 863068 - 863069 - 863070 -  
865210 - 865211 - 865212

### Short Form Specification

Item No. \_\_\_\_\_

Constructed in 304 AISI stainless steel. Basin with sloping bottom, drain, waste strainer and bucket.

Short rollers in plastic on the top of the basin. Square 40x40mm square legs with height-adjustable feet. Designed for 500x500mm dishwashing baskets. Knock-down delivery.

### Main Features

- Suitable to install either a single unit with dishwasher or combined with other tables.
- The table is suitable for both rack type and hood type dishwasher. Rack type dishwasher can be connected directly to the table, while there are optional accessories to adapt the table with hood type dishwasher.
- Conveyors supplied as knockdown and easy to assemble.
- "Key holes" and "snap on" system reduces the number of screws needed for fast and easy installation.
- Designed to transport 500x500 mm dishwashing baskets.
- Another rack conveyor or a dishwasher can be connected on the left or the right.
- "Snap on" system reduces the number of screws needed.
- Smooth manual rack movement on short rollers.

### Construction

- Two legs included.
- Stainless steel feet 50 mm adjustable in height to align the operation height between the dishwasher and table.
- Thick welded flanges for sturdy connection between the units.
- All surfaces smooth with polished finish.
- AISI 304 1,2mm stainless steel basin.
- Self-bearing undershelf eliminates the need for additional frames.
- Sloping bottom of the table grants a smooth and rapid drainage.
- 40x40mm stainless steel tubular and square legs.
- Stainless steel strainer to collect the food waste, then easy to remove for clean.
- Stainless steel waste bucket included.

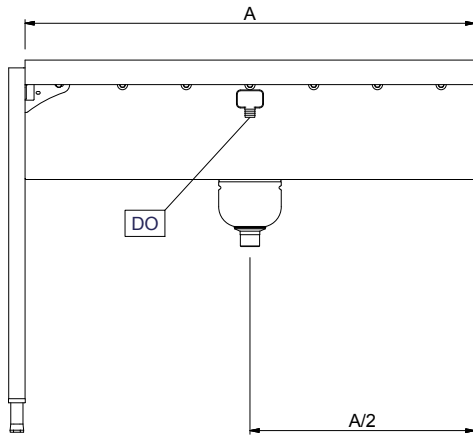
### Sustainability

- The table can be used in loading side.
- The short roller conveyor with deep basin is available from 800mm up to 1100mm with 100mm-step length

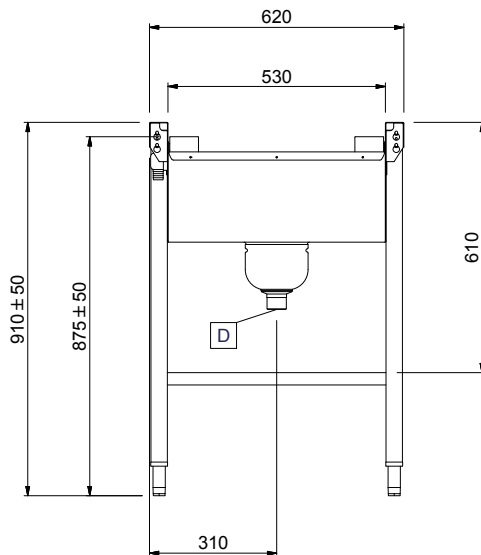


APPROVAL: \_\_\_\_\_

Front

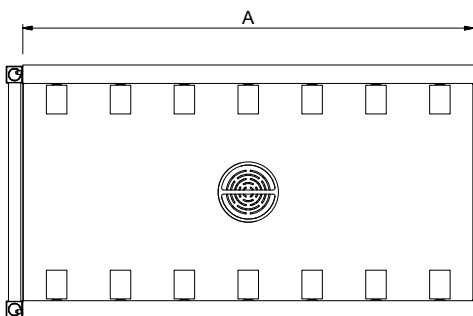


Side



D = Drain

Top



### Key Information:

#### External dimensions, Width:

|                   |         |
|-------------------|---------|
| 863065 (HSSRDB9)  | 900 mm  |
| 863066 (HSSRDB10) | 1000 mm |
| 863067 (HSSRDB12) | 1200 mm |
| 863068 (HSSRDB13) | 1300 mm |
| 863069 (HSSRDB14) | 1400 mm |
| 863070 (HSSRDB15) | 1500 mm |
| 865210 (HSSRDB8)  | 800 mm  |
| 865211 (HSSRDB11) | 1100 mm |
| 865212 (HSSRDB16) | 1600 mm |

#### External dimensions, Depth:

620 mm

#### External dimensions, Height:

910 mm

#### Net weight:

|                   |       |
|-------------------|-------|
| 863065 (HSSRDB9)  | 19 kg |
| 863066 (HSSRDB10) | 21 kg |
| 863067 (HSSRDB12) | 23 kg |
| 863068 (HSSRDB13) | 25 kg |
| 863069 (HSSRDB14) | 26 kg |
| 863070 (HSSRDB15) | 27 kg |
| 865210 (HSSRDB8)  | 18 kg |
| 865211 (HSSRDB11) | 22 kg |
| 865212 (HSSRDB16) | 29 kg |

#### Height adjustment:

50/50 mm

#### Basin material:

Stainless Steel AISI 304 - EN 1.4301

#### Type of rollers:

Short



**Electrolux**  
PROFESSIONAL

## Handling System for Dishwasher Short roller conveyors with deep basin

|   | 863065 | 863066 | 863067 | 863068 | 863069 | 863070 | 865210 | 865211 | 865212 |
|---|--------|--------|--------|--------|--------|--------|--------|--------|--------|
| 863077 - Plain undershell for roller conveyor, 1200 mm  |        |        | ✓      | ✓      | ✓      | ✓      |        |        | ✓      |
| 863078 - Plain undershell for roller conveyor, 1300 mm  |        |        |        | ✓      | ✓      | ✓      |        |        | ✓      |
| 863079 - Plain undershell for roller conveyor, 1400 mm  |        |        |        |        | ✓      | ✓      |        |        | ✓      |
| 863080 - Plain undershell for roller conveyor, 1500 mm  |        |        |        |        |        | ✓      |        |        | ✓      |
| 863103 - Grid undershell, 1200 mm   |        |        | ✓      | ✓      | ✓      | ✓      |        |        | ✓      |
| 863104 - Grid undershell, 1300 mm   |        |        |        | ✓      | ✓      | ✓      |        |        | ✓      |
| 863105 - Grid undershell, 1400 mm   |        |        |        |        | ✓      | ✓      |        |        | ✓      |
| 863106 - Grid undershell, 1500 mm   |        |        |        |        |        | ✓      |        |        | ✓      |
| 865162 - Emergency stop kit for Rack Type Dishwasher (not for Basic handling system)  | ✓      | ✓      | ✓      | ✓      | ✓      | ✓      | ✓      | ✓      | ✓      |
| 865163 - Connection plate (short) for left side to connect handling system to hood type   | ✓      | ✓      | ✓      | ✓      | ✓      | ✓      | ✓      | ✓      | ✓      |
| 865164 - Connection plate (long) for front and right side to connect handling system to hood type   | ✓      | ✓      | ✓      | ✓      | ✓      | ✓      | ✓      | ✓      | ✓      |
| 865217 - End plate for conveyor table   | ✓      | ✓      | ✓      | ✓      | ✓      | ✓      | ✓      | ✓      | ✓      |
| 865219 - Plain undershell for roller conveyor, 600 mm   | ✓      | ✓      | ✓      | ✓      | ✓      | ✓      | ✓      | ✓      | ✓      |
| 865220 - Plain undershell for roller conveyor, 1100 mm  |        |        | ✓      | ✓      | ✓      | ✓      |        | ✓      | ✓      |
| 865221 - Plain undershell for roller conveyor, 1600 mm  |        |        |        |        |        |        |        |        | ✓      |
| 865230 - Shut-off valve (suitable for the basin conveyor to close drain)  | ✓      | ✓      | ✓      | ✓      | ✓      | ✓      | ✓      | ✓      | ✓      |
| 865234 - Connection bracket for plain undershell and grid undershell (to be used if roller conveyor is connected directly to Rack Type Dishwasher)                  | ✓      | ✓      | ✓      | ✓      | ✓      | ✓      | ✓      | ✓      | ✓      |
| 865235 - Connection bracket for plain undershell and grid undershell (to be used if roller conveyor is connected directly to Rack Type Dishwasher with splash hood) | ✓      | ✓      | ✓      | ✓      | ✓      | ✓      | ✓      | ✓      | ✓      |
| 865236 - Grid undershell, 600 mm  | ✓      | ✓      | ✓      | ✓      | ✓      | ✓      | ✓      | ✓      | ✓      |
| 865237 - Grid undershell, 1100 mm   |        |        | ✓      | ✓      | ✓      | ✓      |        | ✓      | ✓      |
| 865238 - Grid undershell, 1600 mm   |        |        |        |        |        |        |        |        | ✓      |
| 865253 - Inclined extension table for roller conveyor   | ✓      | ✓      | ✓      | ✓      | ✓      | ✓      | ✓      | ✓      | ✓      |
| 865452 - Plain undershell for roller conveyor, 800 mm   | ✓      | ✓      | ✓      | ✓      | ✓      | ✓      | ✓      | ✓      | ✓      |
| 865453 - Grid undershell, 800 mm  | ✓      | ✓      | ✓      | ✓      | ✓      | ✓      | ✓      | ✓      | ✓      |

Optional Accessories

Handling System for Dishwasher  
Short roller conveyors with deep basin

The company reserves the right to make modifications to the products without prior notice. All information correct at time of printing.

2025.06.16

